



# 尚耆·賢居系列

SILVERAGE COLLECTION

港島尊尚旗艦安老院舍

A premium flagship residential care home on Hong Kong Island



## 關於我們

擁有超過30年長者護理服務經驗的松齡護老集團近年推出全新「尚耆·賢居」系列，為生活有所追求的長者打造最優質護老院舍。松心薈是系列中全新鉅作，院舍坐落銅鑼灣禮頓道1號，傲踞銅鑼灣核心地段。區內頂級設施林立，交通極為便捷，毗鄰銅鑼灣港鐵站，距離香港五所頂尖私家醫院及公立醫院僅需5至10分鐘車程。

松心薈佔地三層，總樓面面積約35,400平方呎，提供188張床位，松齡將房間及服務劃分成不同級別，讓住客因應需要制定個人化選項，呈獻與眾不同的樂齡體驗。一、二樓為經濟客房，設單人及雙人房間，樓層設計注重舒適與便利，備各種娛樂休憩設施，護理團隊亦時刻為住客提供周到而全面的服務。三樓則設為尊貴樓層，為住客提供最寬敞舒適的獨立房間連浴室套房，人均面積高達400平方呎，樓層融合精緻的裝修設計、頂尖的跨專科醫療支援、長者護理及個人照顧服務等各項細節，務求住客能居於愜意的環境中，享受尊貴無比的寫意退休生活。



## THE ULTIMATE IN SILVER LIVING

The Silverage Collection from the Pine Care Group sets a new standard for comfort, care and luxury living for the elderly in their silver years. Drawing on over 30 years of experience in providing quality senior care services, Pine Residence - the latest residence in the Collection - is designed to provide premium care for individuals looking for quality living in their retirement. Located at 1 Leighton Road, this new addition to the Group's portfolio lies in the heart of Causeway Bay close to top-grade facilities and with easy access to the Causeway Bay MTR Station. It is just 5 to 10 minutes away from five of Hong Kong's top private and public hospitals.

Pine Residence has a floor area of around 35,400 sq. ft. spread over three floors which provides ample space for 188 residents to meet others, while also enjoying their own privacy. The residence offers a variety of premium senior care services and experiences, allowing residents to customise their options to meet their personal preferences. The first and second floors have rooms for single and double occupancy designed for comfort and convenience and include a variety of recreational and leisure facilities. A nursing team is always on hand to provide a full range of attentive services. The third floor offers spacious, individual and twin-bedded suites with en-suite bathrooms, and areas of up to 400 sq. ft. per person. The floor offers a blend of sophisticated luxury with advanced medical support. Aged care and personal care services are designed to provide comfortable, private environments to enjoy one's retirement in peace and quiet.





## 「松」心呈獻

### 全方位跨專科醫療護理服務

松心薈於跨專科醫療護理服務上力臻完美，時刻守護住客的健康。松心薈設有跨專業團隊，包括老人專科醫生、護士、護理人員、社工、物理治療師及職業治療師等，每位住客的個案將獲團隊深入分析與研究，從而制定最佳個人醫療護理方案。

院內設有最先進的醫療設備及儀器，以支援住客治療需要，如TMS無創腦磁激療法、tDCS透顱電刺激治療、腹膜透析及氣管造口護理等服務均可在具專業資格的醫護人員主理下於院內進行，讓住客能免卻來往醫院應診，安於松心薈養尊處優，在復康路上得到全方位支援，喜迎健康生活。

## CARING PERSONAL ATTENTION

Pine Residence offers multi-disciplinary health care services that ensure every resident is always in the most professional and caring hands. Pine Residence has a multi-disciplinary team of geriatricians, nurses, caregivers, social workers, physiotherapists and occupational therapists. Every resident is provided with the best nursing care plan specific to their needs.

The residence is equipped with advanced medical equipment and devices for treatments like transcranial magnetic stimulation (TMS), transcranial direct current stimulation (tDCS), peritoneal dialysis and tracheostomy care, all performed under the supervision of professional medical staff. Residents can enjoy a healthy lifestyle without the need to travel to a hospital for medical care. They also benefit from an extensive range of medical and rehabilitation care to support their recovery.

### 護理及復康方案

- |           |             |
|-----------|-------------|
| 1. 中風復康治療 | 9. 吸氧護理     |
| 2. 氣管造口護理 | 10. 胰島素注射   |
| 3. 腹膜透析   | 11. 注射服務    |
| 4. 疼痛管理   | 12. 失禁護理    |
| 5. 導尿管護理  | 13. 血糖測試    |
| 6. 造口護理   | 14. 傷口護理    |
| 7. 鼻胃管護理  | 15. 認知障礙症訓練 |
| 8. 胃造口護理  | 16. 晚晴護理    |

松心薈特邀中西專科醫生作合作伙伴，就住客個別需要提供適切適時的到診支援；松齡亦銳意打破空間界限，加入遠程醫療視診室，服務涵蓋視像會診、遠程監測、遙距支援及健康教育等，醫生可隨時隨地遙距監察住客狀況，有效鼓勵長者主動參與管理自身健康。

## NURSING CARE AND REHABILITATION PROGRAMMES

- |                          |                            |
|--------------------------|----------------------------|
| 1. Stroke Rehabilitation | 10. Insulin Administration |
| 2. Tracheostomy Care     | 11. Injection Services     |
| 3. Peritoneal Dialysis   | 12. Continence Care        |
| 4. Pain Management       | 13. Diabetes Monitoring    |
| 5. Foley Care            | Blood Glucose Testing      |
| 6. Stoma Care            | H'stix Test                |
| 7. Nasogastric Tube Care | 14. Wound Care             |
| 8. Gastrostomy Care      | 15. Cognitive Training     |
| 9. Oxygen Therapy        | 16. Palliative Care        |

Pine Residence has teamed up with specialists in both Chinese and Western medical care to provide timely support including a telemedicine service and health education. Doctors continually monitor the condition of residents remotely while encouraging residents to participate in their own health management.

## 「松」心演繹

### 樂齡美學

松心薈的每個細節均經過精雕細琢、處處用心，以營造「家」感覺為依歸，整體空間主要以圓弧線條處理，圓滑的輪廓勾勒出生活的流動與舒適感，散發著柔美的和諧氛圍，完美演繹極緻優雅的品味美學，助住客輕鬆適應新生活，更有效強化室內環境安全性。

松心薈地理位置優越，室外景觀開揚無阻隔，採光度極佳，於日光輝映下添上一份寫意溫馨，輕靠窗旁感受微微暖意，在陽光的擁抱下喚醒身心，注入活力迎接每一天。

## 「松」心開啟

### 感官藝術宇宙

松齡細心把各種感官刺激及現實導向融入室內設計，院內各處巧妙地結合大自然元素，如綠色植物、木材及石材等療癒心靈的素材，從層次觀感中突顯配搭細節，營造一室寧謐怡然，彰顯柔和的自然之美，同時讓住客與自然相連結，透過接觸與觀察豐富其感官世界。

為方便住客能更易辨認所屬房間，院舍天花特以七彩繽紛的顏色作導向標示，更因此築成一道永恆的彩虹，呈現幸福的視覺體驗和情感聯繫，讓住客的每一天添上美滿色彩。

松齡邀得本地畫家為松心薈的壁畫走廊揮筆，以墨水結合數碼科技展現香港舊貌，除增添藝術氣息外，亦讓住客能夠懷緬昔日光景，喚起藏於心底的記憶。

## SERENE AND UPLIFTING

Every detail in Pine Residence has been designed to promote a sense of belonging and enjoying one's own home. Smooth contours and reassuring earth tones deliver a feeling of flow and comfort. While the gentle harmonious atmosphere helps residents adapt easily to a new home that is enjoyable, safe and comfortable.

With unobstructed outdoor views, Pine Residence offers a cosy and inviting atmosphere with plentiful natural light. Residents can stay by the windows to soak up the warm sunlight every morning and enjoy a rejuvenated body and mind.

## NATURAL SURROUNDINGS

Pine Residence has integrated a variety of sensory stimuli into the interior design. Elements of nature like plants, wood and stone have been incorporated to convey the gentle beauty of nature. Through observation and touch these rich textures help residents connect with nature, stimulate the senses and promote cognitive health.

The ceilings are marked with colourful signs to make it easy for residents to identify their rooms. This infinite rainbow offers a happy visual experience as well as an emotional connection that adds colour to daily routine.

Pine Care invited local artists to paint murals on the walls, while ink and digital technology brings Hong Kong's past to life with classic local scenes to help residents evoke past memories.



## 「松」心連繫

### 樂齡科技

為確保室內空間無時無刻保持優良的空氣質素，院舍採用醫療級認證NCCO氧聚解空氣淨化機，有效消滅病毒及去除揮發性有機化合物，配合獨立機械式通風系統，同時團隊會定期檢查及記錄院內空氣的各項數據，因應情況作出調整，務求住客能於清新舒適的環境下安心居住。

房內的科技配置應有盡有，每個房間均設有喚鈴鐘，尊貴套房中更特設平板電腦，讓住客可輕鬆安排生活所需，亦可隨時與院內職員聯繫，以便護理人員提供進一步關懷與協助。院內所有電動護理床設有三或五段升降功能，住客可隨意調節不同角度，方便轉換各種姿勢，全面提升安全性；尊貴套房中備有針對樂齡人士的新型沐浴系統，住客可配合生活習慣自由選擇淋浴方式，無憂無慮享受安全舒適的沐浴時光。

院舍內備有多種先進設施，如動態感應器、廣角紅外線離床偵測器等，確保住客能在安全情況下自由活動。各樓層亦設置觸控螢幕，讓住客可掌握日期、時間、天氣和院舍通訊等重要資訊，有效改善或維持對日常生活的正確認知。

## CONNECT LIVE THROUGH MODERN TECHNOLOGY

Indoor air quality is purified to an exceptional standard. Hospital-grade NCCO Oxygen Concentrator air purifiers eliminate viruses and volatile organic compounds, while an independent mechanical ventilation system promotes indoor air circulation. The team regularly checks and records air quality and adjusts it to ensure a fresh and comfortable environment at all times.

Every room is equipped with call bells while digital tablets are available in all the suites so residents can organise their daily needs and stay in touch with staff for further assistance. Electric beds in the rooms and suites are equipped with 3- or 5-function height adjustment. The angle of the bed can be set to facilitate changes of position as well as enhance the safety of care services. A modern shower system is installed in every suite so residents can enjoy a safe and refreshing bathing experience.

Advanced facilities such as motion sensors and wide-angle, infra-red bed detectors are also installed to ensure residents can move freely and safely. Touch-screens are fitted on every floor to help residents improve and maintain their cognitive health by keep tracking of the date, time and weather every day.



## 「松」心重塑

### 飲食之樂

松心薈設有主題餐館，包括為富歐洲格調的西式咖啡廳「Rose Cafe」及傳統中式茶樓「松齡雅敘」，讓住客自主生活由飲食開始，在懷舊音樂的薰陶下，重溫過往於餐館的歡樂時光，亦能藉此結交三五知己，共享美饌。

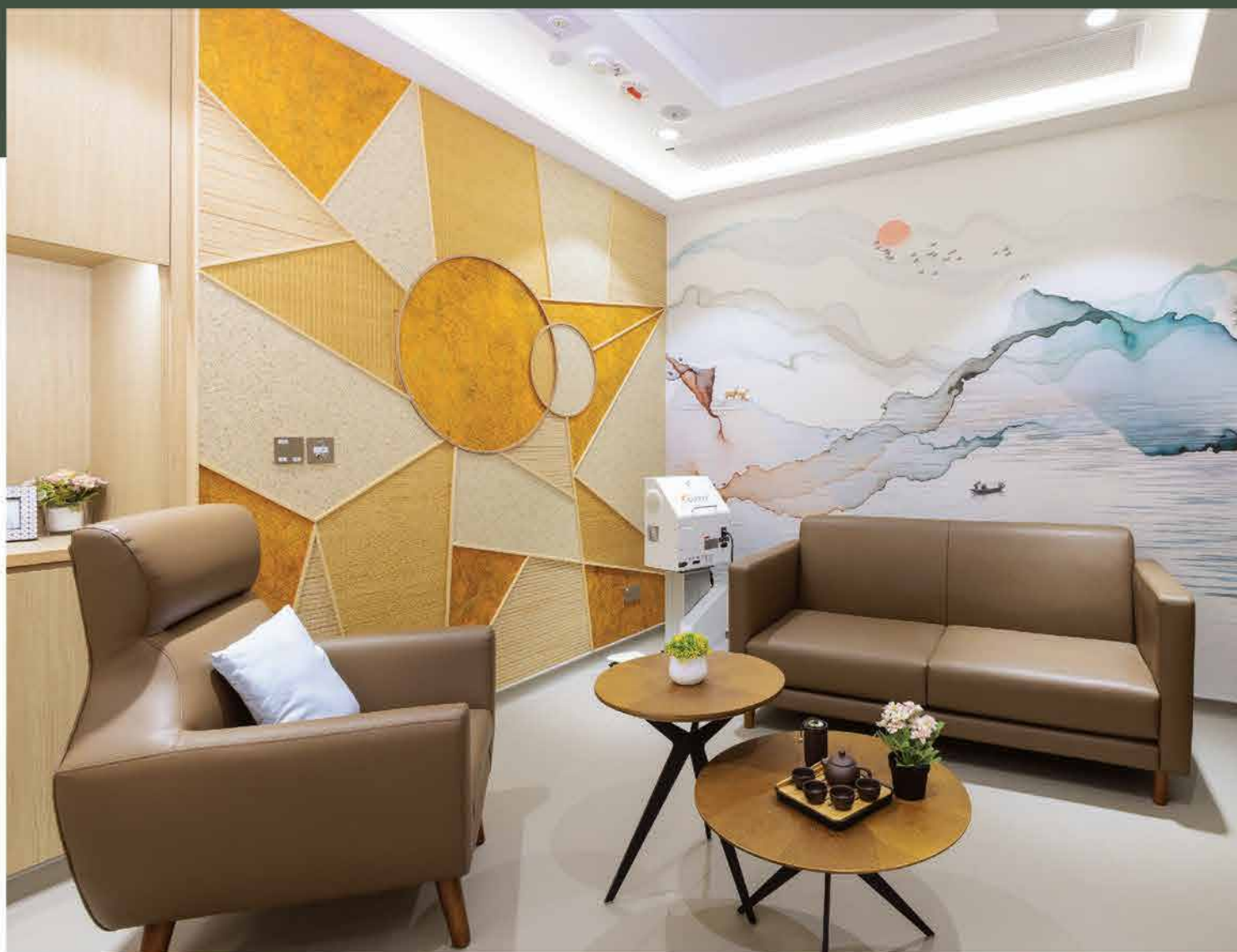
院舍不斷為適合住客的餐飲體驗注入新元素，著力研究出色、香、味、營俱全的餐膳，並因應住客需要把佳餚以各種形態呈現，讓他們能盡情品嚐，重拾對膳食追求與期待感，進一步提升生活質素，享受豐盛而健康的黃金歲月。

## REKINDLE THE JOY OF EATING

Pine Residence has two themed restaurants, the Rose Cafe - a European-style Western cafe and the Pine Pavilion, a traditional Chinese restaurant. Residents can enjoy independence in what they wish to eat, relish the relaxing dining moment with classical music, and recall their good old days. Both restaurants offer a harmonious venue for residents to connect and share delicacies together.

Meal times are always a pleasure at Pine Residence. New elements are constantly being added to enhance the dining experience. Menus are packed with colour, aroma, flavour and beautifully presented nutritionally-balanced meals to meet the tastes, preferences and needs of residents. Every meal can be enjoyed with a sense of anticipation and joy. Golden oldies play in the background to further enhance the warm and congenial atmosphere.





## 設備及設施

### EQUIPMENT AND FACILITIES

- 面容識別防遊走系統
- 三或五功能電動護理床
- 座式淋浴器
- 浴床沐浴間
- 物理治療室
- 感官治療室
- 懷緬治療空間
- 壁畫走廊
- 園藝空間
- 主題餐廳
- 特色茶室
- 影視娛樂室
- 麻雀室
- 理髮室
- Face Recognition Anti-Wandering System
- 3-function and 5-function Electric Care Beds
- Sit Down Shower Rooms
- Bed-to-Bath Shower Rooms
- Physiotherapy Room
- Sensory Therapy Room
- Memory Therapy Room
- Mural Corridor
- Gardening Area
- Themed Restaurants
- Cafe
- Entertainment Room
- Mahjong Room
- Hair Salon



**查詢熱線**  
ENQUIRY HOTLINE

**3568 7498**

www.pinecaregroup.com | info.pr@pinecaregroup.com

更多詳情  
MORE DETAILS

